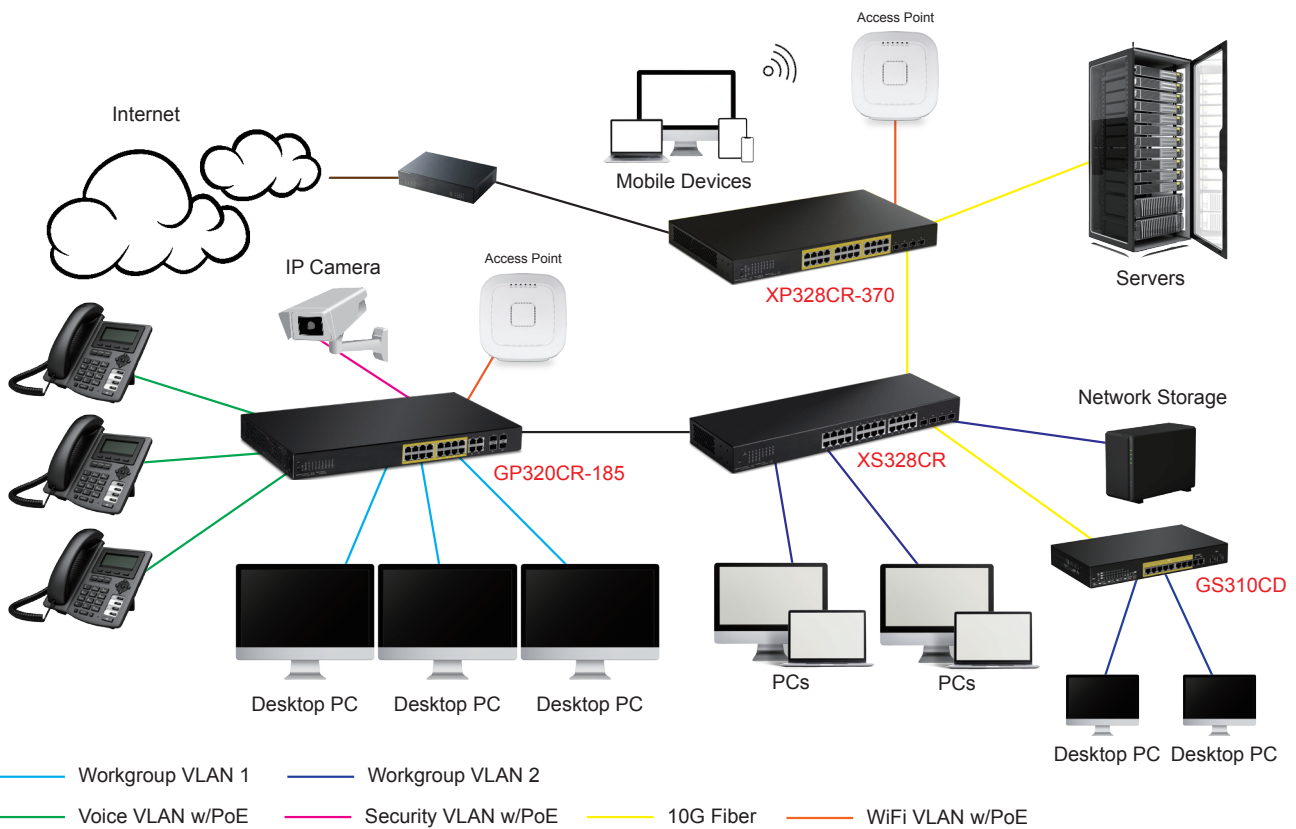


Features

- Plug-and-play no setup required
- WEB based management GUI
- Advanced configuration for QoS, VLAN, Link Aggregation....etc
- Supports SNMP and RMON remote management
- Auto MDI/MDIX for each port
- Back pressure flow control for half-duplex
- IEEE802.3x Flow Control supports for Full Duplex
- Extensive front-panel diagnostic LEDs
- Store-and-Forward switching method
- Supports Jumbo Frame
- Non-blocking switching architecture for maximum throughput at wire speed
- Embedded Packet Buffer Memory for Performance Improvement
- IEEE 802.3af and IEEE 802.3at Power Over Ethernet (PoE) for IP Cameras, IP Phones and Wireless APs



Application





Hardware Specifications

Interface	GS310CD	GS320CD	GS328CR	GS352CR
Gigabit Ethernet	8	20	28	52
SFP	2	4 (Shared)	4 (Shared)	4 (Shared)
SFP+	--	--	--	--
PoE Port	--	--	--	--
Performance				
Switching Capacity	20 Gbps	40 Gbps	56 Gbps	104 Gbps
MAC Address Table Size	8K	8K	8K	16K
Packet Buffer Memory	512KB	512KB	512KB	1.5MB
Jumbo Frame Size	10KB	10KB	10KB	10KB
Forwarding Rate (64-byte)/Port	1.488M pps	1.488M pps	1.488M pps	1.488M pps
Auto MDI/MDIX	Yes	Yes	Yes	Yes
HOL Blocking Prevention	Yes	Yes	Yes	Yes
PoE Specifications				
802.3af PoE Ports	--	--	--	--
802.3at PoE+ Ports	--	--	--	--
PoE Maximum Power Per Port	--	--	--	--
Total PoE Power Budget	--	--	--	--
LED				
Per Device	Power	Power	Power	Power
Per Port	Link/Activity, SFP	Link/Activity, SFP	Link/Activity, SFP	Link/Activity, SFP
Energy Efficiency				
Green Ethernet (EEE, 802.3az)	Yes	Yes	Yes	Yes
FAN/Fanless	Fanless	Fanless	Fanless	Fanless
Physical Specifications				
Enclosure Form Factor	Desktop	Desktop	Rack-Mount	Rack-Mount
Material	Metal	Metal	Metal	Metal
Dimensions (W x D x H mm)	280 x 125.8 x 44	280 x 180 x 44	440 x 140 x 44	440 x 210 x 44
Weight	0.98 kg	1.76 kg	2.15 kg	3.48 kg
Environmental Specifications				
Operating Temperature	-5° – 50° C	-5° – 50° C	-5° – 50° C	-5° – 50° C
Operating Humidity (non-condensing)	95% Max.	95% Max.	95% Max.	95% Max.
EMC Certifications				
EMC Certifications	FCC/CE	FCC/CE	FCC/CE	FCC/CE
Safety				
Safety Certifications	UL/CB	UL/CB	UL/CB	UL/CB
Power				
Power In	Internal Switching Power 100~240 VAC	Internal Switching Power 100~240 VAC	Internal Switching Power 100~240 VAC	Internal Switching Power 100~240 VAC
Maximum Power Consumption	7.1 W	14.6 W	17.3 W	34.9 W
IEEE Network Protocols				
IEEE 802.3 10BASE-T Ethernet	✓	✓	✓	✓
IEEE 802.3u 100BASE-TX Fast Ethernet	✓	✓	✓	✓
IEEE 802.3ab 1000BASE-T Gigabit Ethernet	✓	✓	✓	✓
IEEE 802.3z 1000BASE-X (by Optic Fiber)	✓	✓	✓	✓
IEEE 802.3ae 10Gbits by Optic Fiber	--	--	--	--
IEEE 802.3x Flow Control	✓	✓	✓	✓
IEEE 802.3az Energy Efficiency Ethernet	✓	✓	✓	✓
IEEE 802.3af PoE/IEEE 802.3at	--	--	--	--
IEEE 802.3ad LACP/IEEE 802.1w RSTP	✓/✓	✓/✓	✓/✓	✓/✓
IEEE 802.1d STP/IEEE 802.1s MSTP	✓/✓	✓/✓	✓/✓	✓/✓
IEEE 802.1p Class of Service/IEEE 802.1ab LLDP	✓/✓	✓/✓	✓/✓	✓/✓
IEEE 802.1Q Tagged VLAN	✓	✓	✓	✓
IEEE 802.1x RADIUS	✓	✓	✓	✓



Hardware Specifications

Interface	XS328CR	GP310CD-123	GP320CR-185	GP320CR-370
Gigabit Ethernet	24	8	20	20
SFP	--	2	4 (Shared)	4 (Shared)
SFP+	4	--	--	--
PoE Port	--	8	16	16
Performance				
Switching Capacity	128 Gbps	20 Gbps	40 Gbps	40 Gbps
MAC Address Table Size	16K	8K	8K	8K
Packet Buffer Memory	1.5MB	512KB	512KB	512KB
Jumbo Frame Size	12KB	10KB	10KB	10KB
Forwarding Rate (64-byte)/Port	1.488 / 14.88 Mpps	1.488M pps	1.488M pps	1.488M pps
Auto MDI/MDIX	Yes	Yes	Yes	Yes
HOL Blocking Prevention	Yes	Yes	Yes	Yes
PoE Specifications				
802.3af PoE Ports	--	8	16	16
802.3at PoE+ Ports	--	8	16	16
PoE Maximum Power Per Port	--	30	30W	30W
Total PoE Power Budget	--	123W	185W	370W
LED				
Per Device	Power	Power,PoE MAX	Power,PoE MAX,Fan	Power,PoE MAX,Fan
Per Port	Link/Activity,SFP	Link/Activity,SFP,PoE	Link/Activity,PoE	Link/Activity,PoE
Energy Efficiency				
Green Ethernet (EEE, 802.3az)	Yes	Yes	Yes	Yes
FAN/Fanless	Fanless	Fanless	Fan	Fan
Physical Specifications				
Enclosure Form Factor	Rack-Mount	Desktop	Rack-Mount	Rack-Mount
Material	Metal	Metal	Metal	Metal
Dimensions (W x D x H mm)	440 x 140 x 44	330 x 180 x 44	440 x 250 x 44	440 x 250 x 44
Weight	2.09 kg	1.77 kg	3.66 kg	3.89 kg
Environmental Specifications				
Operating Temperature	-5° – 50° C	-5° – 50° C	-5° – 50° C	-5° – 50° C
Operating Humidity (non-condensing)	95% Max.	95% Max.	95% Max.	95% Max.
EMC Certifications				
EMC Certifications	FCC/CE	FCC/CE	FCC/CE	FCC/CE
Safety				
Safety Certifications	UL/CB	UL/CB	UL/CB	UL/CB
Power				
Power In	Internal Switching Power 100~240 VAC	Internal Switching Power 100~240 VAC	Internal Switching Power 100~240 VAC	Internal Switching Power 100~240 VAC
Maximum Power Consumption	22.8 W	9.4 W (No PoE)	226 W	460 W
IEEE Network Protocols				
IEEE 802.3 10BASE-T Ethernet	✓	✓	✓	✓
IEEE 802.3u 100BASE-TX Fast Ethernet	✓	✓	✓	✓
IEEE 802.3ab 1000BASE-T Gigabit Ethernet	✓	✓	✓	✓
IEEE 802.3z 1000BASE-X (by Optic Fiber)	✓	✓	✓	✓
IEEE 802.3ae 10Gbits by Optic Fiber	✓	--	--	--
IEEE 802.3x Flow Control	✓	✓	✓	✓
IEEE 802.3az Energy Efficiency Ethernet	✓	✓	✓	✓
IEEE 802.3af PoE/IEEE 802.3at	--	✓/✓	✓/✓	✓/✓
IEEE 802.3ad LACP/IEEE 802.1w RSTP	✓/✓	✓/✓	✓/✓	✓/✓
IEEE 802.1d STP/IEEE 802.1s MSTP	✓/✓	✓/✓	✓/✓	✓/✓
IEEE 802.1p Class of Service/IEEE 802.1ab LLDP	✓/✓	✓/✓	✓/✓	✓/✓
IEEE 802.1Q Tagged VLAN	✓	✓	✓	✓
IEEE 802.1x RADIUS	✓	✓	✓	✓



Hardware Specifications

Interface	GP328CR-185	GP328CR-370	GP352CR-370	GP352CR-740
Gigabit Ethernet	28	28	52	52
SFP	4 (Shared)	4 (Shared)	4 (Shared)	4 (Shared)
SFP+	--	--	--	--
PoE Port	24	24	48	48
Performance				
Switching Capacity	56 Gbps	56 Gbps	104 Gbps	104 Gbps
MAC Address Table Size	8K	8K	16K	16K
Packet Buffer Memory	512KB	512KB	1.5 MB	1.5 MB
Jumbo Frame Size	10KB	10KB	10KB	10KB
Forwarding Rate (64-byte)/Port	1.488 Mpps	1.488 Mpps	1.488 Mpps	1.488 Mpps
Auto MDI/MDIX	Yes	Yes	Yes	Yes
HOL Blocking Prevention	Yes	Yes	Yes	Yes
PoE Specifications				
802.3af PoE Ports	24	24	48	48
802.3at PoE+ Ports	24	24	48	48
PoE Maximum Power Per Port	30W	30W	30W	30W
Total PoE Power Budget	185W	370W	370W	740W
LED				
Per Device	Power,PoE MAX,Fan	Power,PoE MAX,Fan	Power,PoE MAX,Fan	Power,PoE MAX,Fan
Per Port	Link/Activity,PoE	Link/Activity,PoE	Link/Activity,PoE	Link/Activity,PoE
Energy Efficiency				
Green Ethernet (EEE, 802.3az)	Yes	Yes	Yes	Yes
FAN/Fanless	Fan	Fan	Fan	Fan
Physical Specifications				
Enclosure Form Factor	Rack-Mount	Rack-Mount	Rack-Mount	Rack-Mount
Material	Metal	Metal	Metal	Metal
Dimensions (W x D x H mm)	440 x 250 x 44	440 x 250 x 44	440 x 430 x 44	440 x 430 x 44
Weight	3.75 kg	3.92 kg	6.12 kg	6.58 kg
Environmental Specifications				
Operating Temperature	-5° – 50° C	-5° – 50° C	-5° – 50° C	-5° – 50° C
Operating Humidity (non-condensing)	95% Max.	95% Max.	95% Max.	95% Max.
EMC Certifications				
EMC Certifications	FCC/CE	FCC/CE	FCC/CE	FCC/CE
Safety				
Safety Certifications	UL/CB	UL/CB	UL/CB	UL/CB
Power				
Power In	Internal Switching Power 100~240 VAC	Internal Switching Power 100~240 VAC	Internal Switching Power 100~240 VAC	Internal Switching Power 100~240 VAC
Maximum Power Consumption	256 W	446 W	479 W	963 W
IEEE Network Protocols				
IEEE 802.3 10BASE-T Ethernet	✓	✓	✓	✓
IEEE 802.3u 100BASE-TX Fast Ethernet	✓	✓	✓	✓
IEEE 802.3ab 1000BASE-T Gigabit Ethernet	✓	✓	✓	✓
IEEE 802.3z 1000BASE-X (by Optic Fiber)	✓	✓	✓	✓
IEEE 802.3ae 10Gbits by Optic Fiber	--	--	--	--
IEEE 802.3x Flow Control	✓	✓	✓	✓
IEEE 802.3az Energy Efficiency Ethernet	✓	✓	✓	✓
IEEE 802.3af PoE/IEEE 802.3at	✓/✓	✓/✓	✓/✓	✓/✓
IEEE 802.3ad LACP/IEEE 802.1w RSTP	✓/✓	✓/✓	✓/✓	✓/✓
IEEE 802.1d STP/IEEE 802.1s MSTP	✓/✓	✓/✓	✓/✓	✓/✓
IEEE 802.1p Class of Service/IEEE 802.1ab LLDP	✓/✓	✓/✓	✓/✓	✓/✓
IEEE 802.1Q Tagged VLAN	✓	✓	✓	✓
IEEE 802.1x RADIUS	✓	✓	✓	✓



Hardware Specifications

Interface		XP328CR-370
Gigabit Ethernet		24
SFP		--
SFP+		4
PoE Port		24
Performance		
Switching Capacity		128 Gbps
MAC Address Table Size		16K
Packet Buffer Memory		1.5 MB
Jumbo Frame Size		12KB
Forwarding Rate (64-byte)/Port		1.488 / 14.88 Mpps
Auto MDI/MDIX		Yes
HOL Blocking Prevention		Yes
PoE Specifications		
802.3af PoE Ports		24
802.3at PoE+ Ports		24
PoE Maximum Power Per Port		30W
Total PoE Power Budget		370W
LED		
Per Device		Power,PoE MAX,Fan
Per Port		Link/Activity,PoE
Energy Efficiency		
Green Ethernet (EEE, 802.3az)		Yes
FAN/Fanless		Fan
Physical Specifications		
Enclosure Form Factor		Rack-Mount
Material		Metal
Dimensions (W x D x H mm)		440 x 249 x 44
Weight		3.94 kg
Environmental Specifications		
Operating Temperature		-5° – 50° C
Operating Humidity (non-condensing)		95% Max.
EMC Certifications		FCC/CE
Safety		
Safety Certifications		UL/CB
Power		
Power In		Internal Switching Power 100~240 VAC
Maximum Power Consumption		393.7 W
IEEE Network Protocols		
IEEE 802.3 10BASE-T Ethernet		✓
IEEE 802.3u 100BASE-TX Fast Ethernet		✓
IEEE 802.3ab 1000BASE-T Gigabit Ethernet		✓
IEEE 802.3z 1000BASE-X (by Optic Fiber)		✓
IEEE 802.3ae 10Gbits by Optic Fiber		✓
IEEE 802.3x Flow Control		✓
IEEE 802.3az Energy Efficiency Ethernet		✓
IEEE 802.3af PoE/IEEE 802.3at		✓/✓
IEEE 802.3ad LACP/IEEE 802.1w RSTP		✓/✓
IEEE 802.1d STP/IEEE 802.1s MSTP		✓/✓
IEEE 802.1p Class of Service/IEEE 802.1ab LLDP		✓/✓
IEEE 802.1Q Tagged VLAN		✓
IEEE 802.1x RADIUS		✓

Software Specifications

Management

HTTP/HTTPS (SSL v2/3 TLS) / SNMP v1, v2c, v3 / RMON v1 / Static Unicast MAC address / Enable/disable 802.3az Power Saving / LLDP / LLDP-MED / Virtual Cable Diagnostic Test / IPv6: IPv6 Neighbor Discovery, IPv6 / Static IP, DHCPv6, Auto Configuration / CLI (Telnet / SSHv2) for Basic / Administration / Dual Image and Configuration / TC Root/Protect / Upload Firmware

MIB

RFC 1213 MIB II / RFC 1354 IP Forward Table MIB / RFC 1271 RMON MIB / RFC 2465 IPV6 MIB / RFC 2933 IGMP Snooping MIB / RFC 3019 MLD Snooping MIB / RFC 2026 DHCP Snooping MIB / RFC 4323 QOS MIB / RFC 3415 SNMP MIB / RFC 4318 STP MIB / RFC 1611 DNS MIB / IEEE 802.1ab LLDP-MIB / IEEE 802.3ad LA MIB / IEEE 802.1Q Private VLAN MIB / IEEE 802.1Q GVRP MIB / IEEE 802.1x PNAC MIB / IEEE 802.1q VLAN MIB / ACL MIB / Bandwidth CTRL MIB / LBD MIB / Mirror MIB / IPV6 Neighbor MIB / SNTP MIB / Strom CTRL MIB / Statistics MIB / Tool MIB / Voice VLAN MIB / DOS MIB

Spanning Tree

IEEE 802.1d STP / IEEE 802.1w RSTP / IEEE 802.1z MSTP

Link Aggregation

Static Link Aggregation / 802.3ad Dynamic LACP

Quality of Service

Port-based QoS / 802.1p Class of Service / Port Priority / DSCP / Bandwidth Control per Port / Queue Scheduling(SP+WFQ) / IPv6 Traffic Class

VLAN

Port-based VLAN / 802.1Q Tagged VLAN / Multiple Management VLAN / Dynamic GVRP / VLAN Groups(Up to 256 Groups) & ID Range(1-4094) / Asymmetric VLAN / Voice VLAN(10 users OUIs) / Protocol based VLAN

Multicast

IGMP Snooping(v1/2/3 per VLAN) / MLD Snooping / IGMP Fast Leave / MVR (Multicast VLAN Registration) / Static Unicast Address / Static Multicast Address / Multicast Entries

Port Mirror

One to One / Many to One / Rx, Tx or Both

Access Control

802.1X Port-Based / Local Dial In User Authentication / DHCP Snooping (per VLAN) / Loopback Detection / Duplicated Address Detection / Trusted Host / Denial of Service (DoS) / IP MAC Port Binding / Dynamic ARP Inspection / Block Unknown Multicast (Min. Limit: 8Kbps) / Multicast (Min. Limit: 8Kbps) / Loopback Detection

ACL IPv4 L2-L4 & IPv6

MAC Address / VLAN ID / Ether Type (IPv4 only) / IP Protocol 0-255 / TCP/UDP Port 1-65535 / 802.1p / DSCP (IPv4 only) / IPv6 Address (IPv6 only)

Layer 3 Features

IPv4 / IPv6 Static Routing / Multiple IP Interfaces / Multiple Routing Table Entries / ARP Table / Inter-VLAN Routing

**Specifications are subject to change without notice*